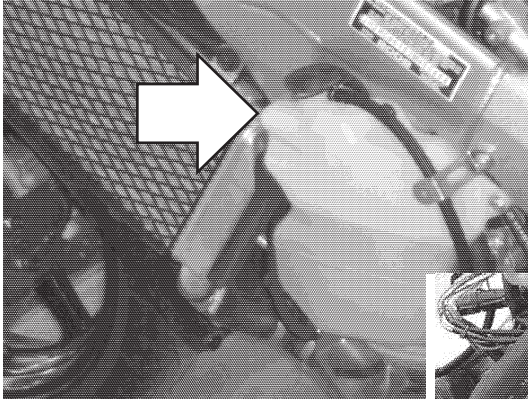
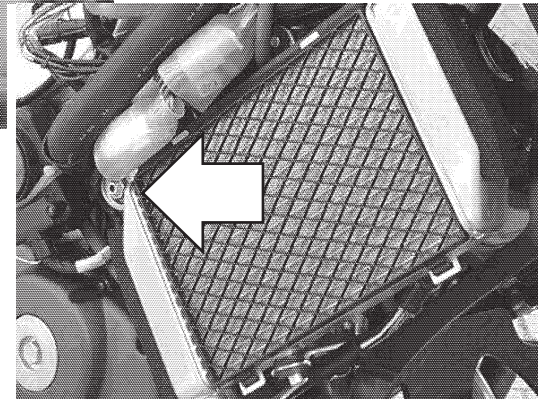


**Protective sliders
HONDA VFR 800**

Year of production: '98 -
Product code: 10113



Assembly position (left side)
Instead of the nut on the liquid container.



Assembly position
(right side)

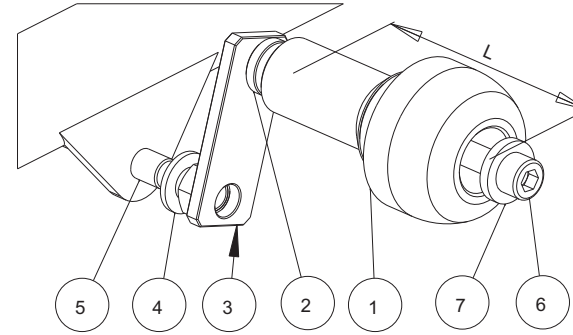
Assembly instructions

1. Remove the fairings.
2. On the left side replace the original nut M12 marked with the arrow with the metal adapter (part #3). Use the washers (parts #4) to find the correct distance between the frame and the liquid container.
- On the right side please replace the original screw indicated with the arrow with the main screw (part #7) and the metal bar (part #3).
3. Mark the positions of the holes on the fairings. The correct positions are opposite the threaded holes in the metal parts #3.
5. Drill the holes in the fairings. We suggest to drill small holes first (eg. 0,20" in diameter). Then check if the holes are in correct positions by putting the fairings on.
6. If the positions of the holes are correct, assemble the fairings.
7. Assemble the sliders, the screws and the washers (on the left side: parts #1, #2, #6 and #7; on the right side: parts #1, #2, #5, #6) according to the drawings. Put them into the second holes in parts #3.

We suggest to use the threadlocker to make sure that the screws do not get loose.

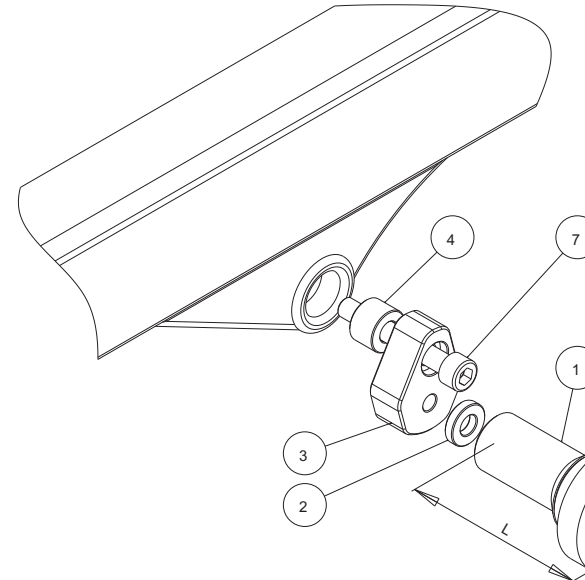
This product is entirely produced in the European Union. This product is a professional accessory to be used on the race track. Renner LTD takes no responsibility for any damages occurred despite of using protective accessories. For more information go to www.renner-moto.com

Assembly scheme (left side)



NO	PART	DIMENSION
1	Slider	L = 105 mm
2	Sleeve	d=20 mm, t=5mm
3	Steel bar	
4	Distance washer	
5	Original screw	M12
6	Screw	M10, l=100mm
7	Washer	10

Assembly scheme (right side)



NO	PART	DIMENSION
1	Slider	L = 105 mm
2	Washer	d=20 mm, t=5mm
3	Bar	
4	Sleeve	d=22 mm, t=15mm
5	Screw	M10, l=110mm
6	Washer	10
7	Screw	M10, l = 70 mm

Dimensions of the sleeves

