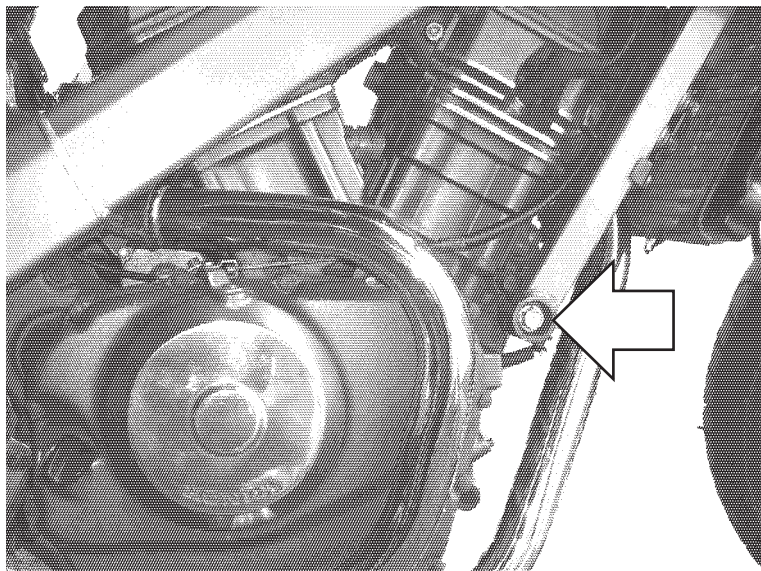


**Protective sliders**  
**HONDA NTV 650**

Year of production: all  
 Product code: 10115



Assembly position  
 (both sides)

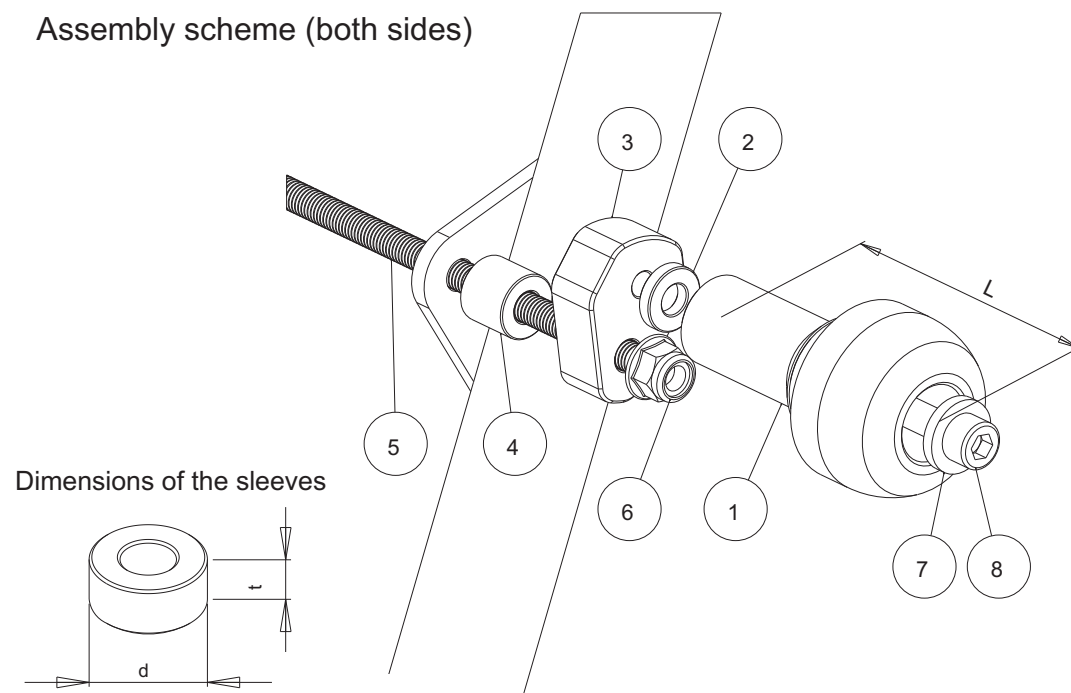
**Assembly instructions**

1. Remove the screw indicated by the arrow.
2. Replace the removed screw by the new long screw (part #7), nuts (part #8), aluminium sleeves (parts #4) and metal bars (parts #3) according to the attached drawing. Put the metal bars (parts #3) in the right positions according to the drawing.
3. Assemble the sliders and the screws according to the drawing (parts #1, #2, #5, #6).
4. Assemble the screws #5 and the sliders with the metal bars #3.

We suggest to use the threadlocker to make sure that the screws do not get loose.

This product is entirely produced in the European Union. This product is a professional accessory to be used on the race track. Renner LTD takes no responsibility for any damages occurred despite of using protective accessories. For more information go to [www.renner-moto.com](http://www.renner-moto.com)

**Assembly scheme (both sides)**



NO	PART	LEFT SIDE	RIGHT SIDE
1	Slider	L = 90 mm	L = 90 mm
2	Sleeve	d =20mm, t=5mm	d =20mm, t=5mm
3	Bar		
4	Sleeve	d=22 mm, t=20 mm	d=22 mm, t=20 mm
5	Stud	M10	-
6	Nut	M10	M10
7	Washer		
8	Screw	M10	M10