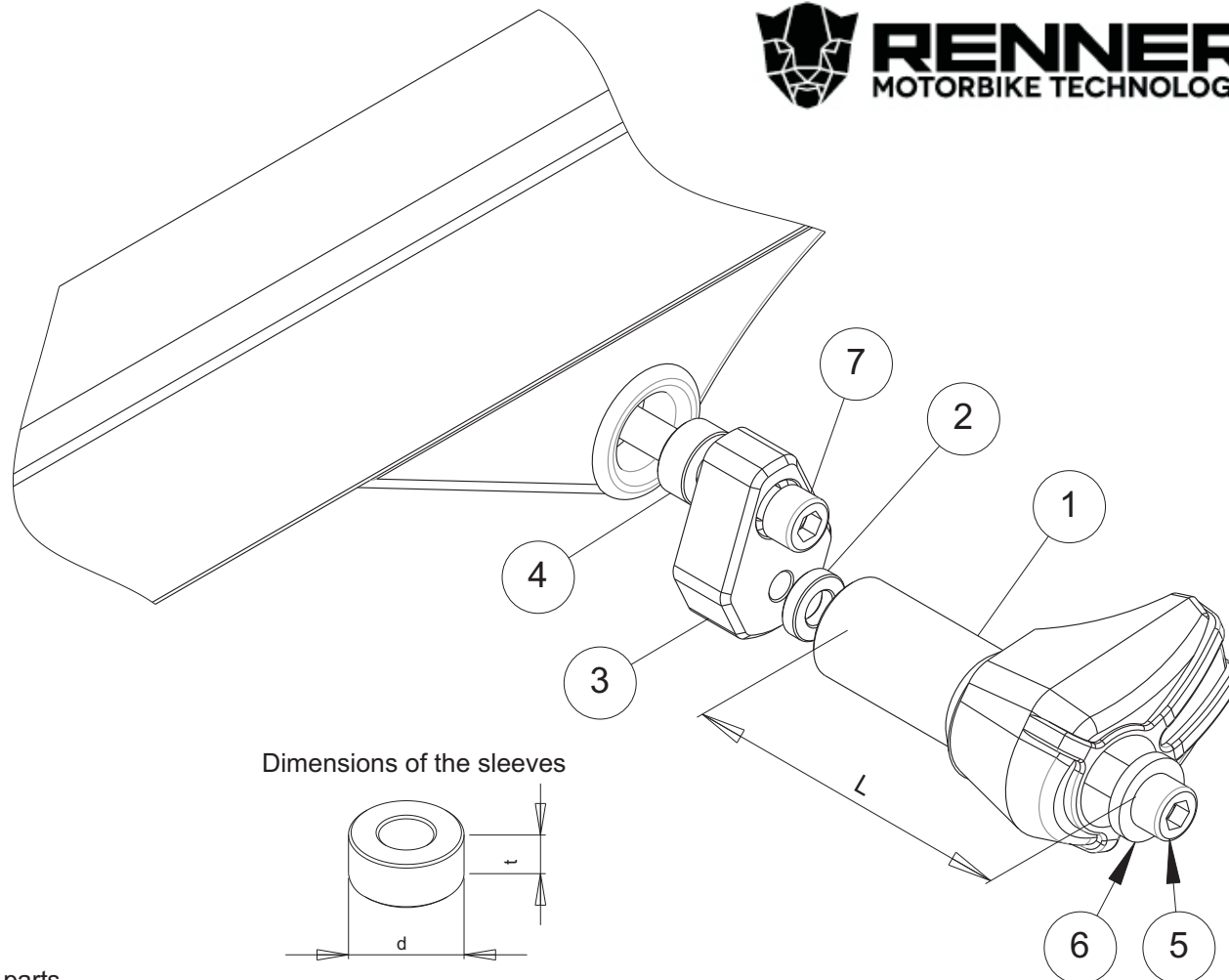


Crash Pads Honda CBR 650 F

Year of Production: all

Product Code: 10134



Assembly instructions

1. Remove the fairings.
2. Remove the screws indicated with the arrows.
3. Please replace the removed screws by the new screws (parts #4) and metal parts (parts #2) according to the attached drawing. Put the metal parts (parts #2) in the right position according to the drawing.
4. Please put the aluminium bars almost vertically downwards. Then the holes in the fairings will be situated on flat surface of the fairing.
5. Mark the positions of the holes on the fairings. The correct positions are opposite the threaded holes in the metal parts #2.
6. Drill the holes in the fairings. We suggest to drill small holes first (eg. 0,20" in diameter). Then check if the holes are in correct positions by putting the fairings on.
7. If the positions of the holes are correct, assemble the fairings.
8. Assemble the sliders, the screws and the washers (parts #1, #6 and #5) according to the drawing. Put them into the second holes in part #2.

We suggest to use the threadlocker to make sure that the screws do not get loose.

This product is entirely produced in the European Union. This product is a professional accessory to be used on the race track. Renner LTD takes no responsibility for any damages occurred despite of using protective accessories. For more information go to www.renner-moto.com

No	PART	LEFT SIDE	RIGHT SIDE
1	SLIDER	L = 75 mm	L = 75 mm
2	SLEEVE	d=20 mm, t=5 mm	d=20 mm, t=5 mm
3	ALUMINUM BAR		
4	SLEEVE	d=22 mm, t=10 mm	d=22 mm, t=10 mm
5	BOLT	M10	M10
6	WASHER		
7	MAIN BOLT	M12X80 mm	M12X60 mm