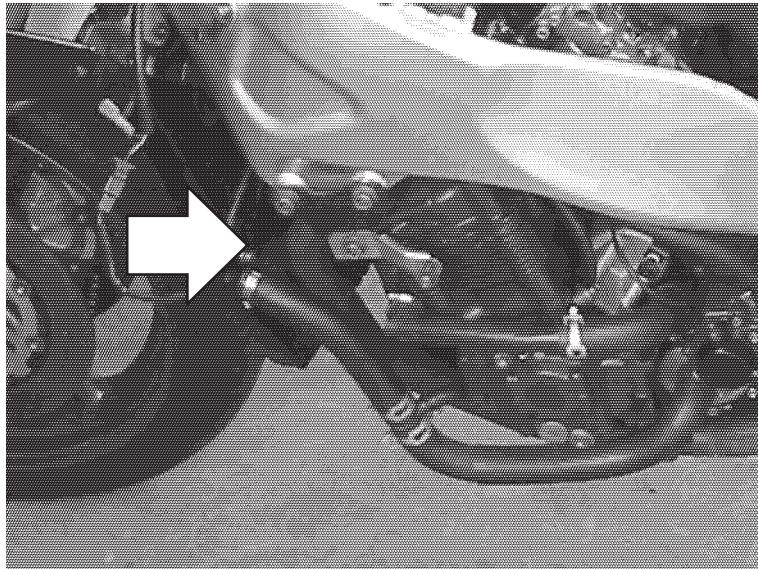


**Protective sliders**  
**SUZUKI RF 600 R / RF 900 R**

Year of production: all  
 Product code: 10307



Assembly position  
 Both sides

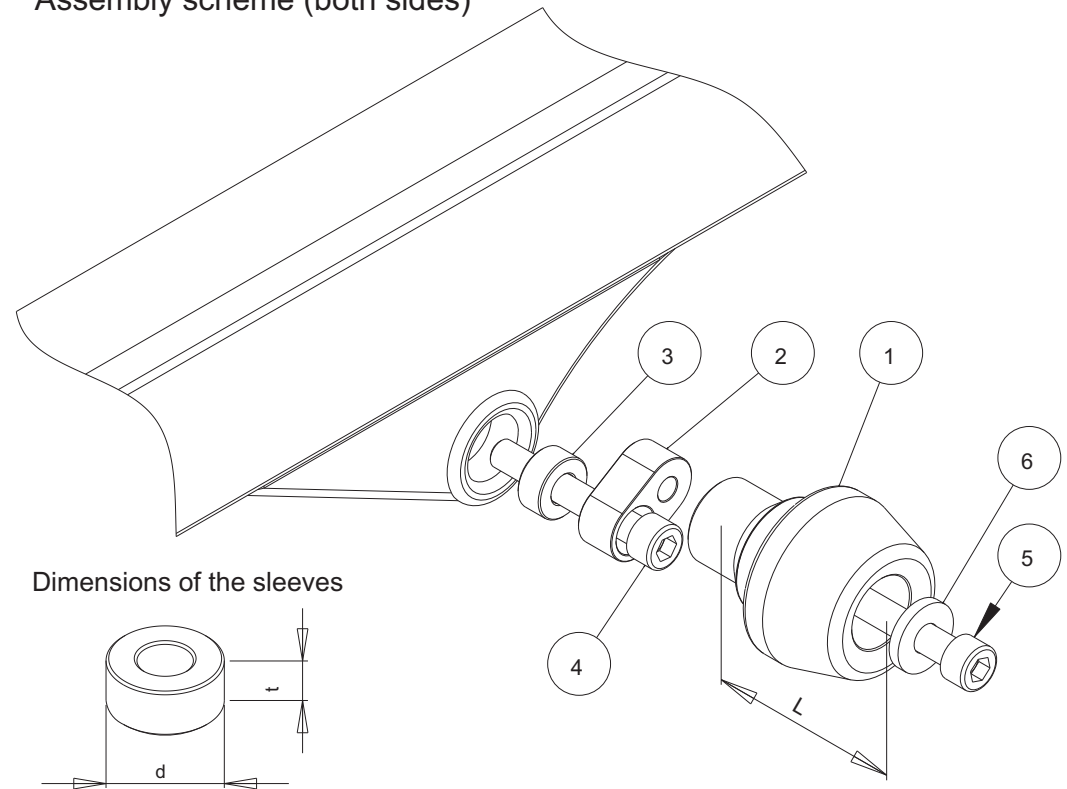
**Assembly instructions**

1. Remove fairings.
2. Remove screws indicated by arrows.
3. Replace the removed with new screws (parts #4), aluminium sleeves (parts #3) and metal bars (parts #2) as shown on the drawing. Put the metal bars (parts #2) in desired position. Exact direction of the bars is not definite.
4. Mark positions of holes on fairings. The correct positions are opposite threaded holes in metal parts #2.
5. Drill the holes in fairings. We suggest to drill small holes first (eg. 0,20" in diameter).
6. If positions of the holes are correct, assemble the fairings.
7. Assemble the sliders, the screws and the washers (parts #1, #5 and #6) according to the drawing. Put them into the second holes in part #2.

We suggest to use the threadlocker to make sure that the screws do not get loose.

This product is entirely produced in the European Union. This product is a professional accessory to be used on the race track. Renner LTD takes no responsibility for any damages occurred despite of using protective accessories. For more information go to [www.renner-moto.com](http://www.renner-moto.com)

**Assembly scheme (both sides)**



NO	PART	LEFT SIDE	RIGHT SIDE
1	Slider	L = 60 mm	L = 60 mm
2	Steel bar		
3	Sleeve	d =22mm, t=5mm	d =22mm, t=5mm
4	Screw	M10, l = 45 mm	M10, l = 45 mm
5	Screw	M10	M10
6	Washer		