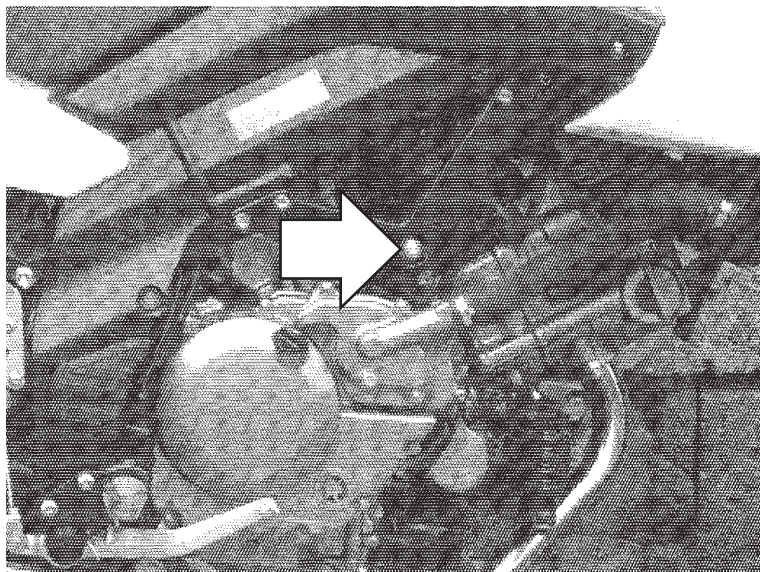


Protective sliders
SUZUKI DL 650 V-STROM

Year of production: ALL

Product code: 10319



Assembly position
(both sides)

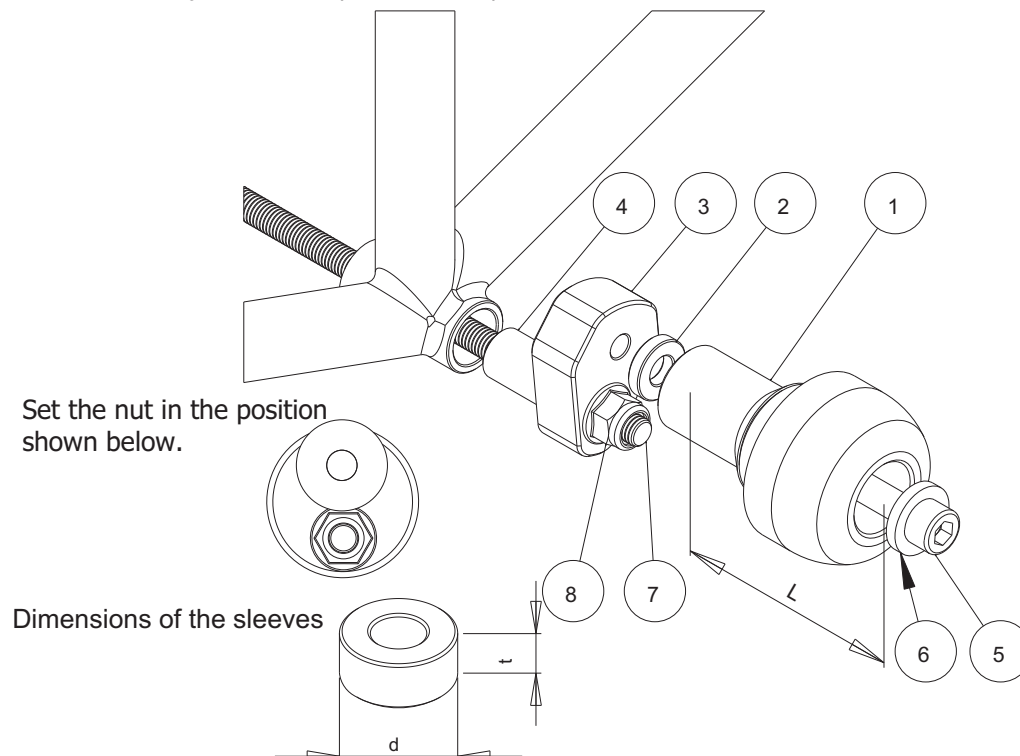
Assembly instructions

1. Remove the screws indicated with the arrows.
2. Replace the removed screws by the new long screw (parts #7) and metal bars (parts #3) according to the attached drawing. Put the metal parts (parts #3) in the right positions according to the drawing.
3. Assemble the sliders and the screws according to the drawing (parts #1, #2, #6, #5).
4. Assemble the screws #5 and the sliders with the metal bars #3.

We suggest to use the threadlocker to make sure that the screws do not get loose.

This product is entirely produced in the European Union. This product is a professional accessory to be used on the race track. Renner LTD takes no responsibility for any damages occurred despite of using protective accessories. For more information go to www.renner-moto.com

Assembly scheme (both sides)



No	Part	Left side	Right
1	Slider	L = 90 mm	L = 90 mm
2	Sleeve	d=20 mm, t=5 mm	d=20 mm, t=5 mm
3	Metal bar		
4	Sleeve	d=25 mm, t=20 mm	d=25 mm, t=20 mm
5	Screw	M10	M10
6	Washer		
7	Long screw	M12	-
8	Nut	M12	M12