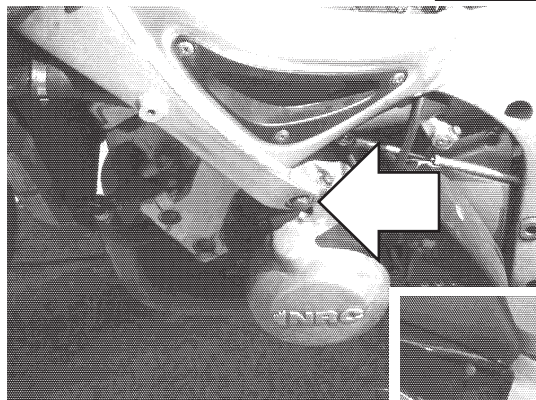
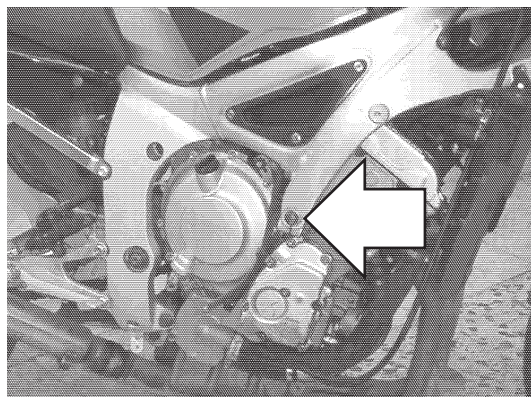


<b>Zestaw ślizgaczy YAMAHA YZF R6</b>
Rok produkcji: do '02
Nr zestawu: 10402

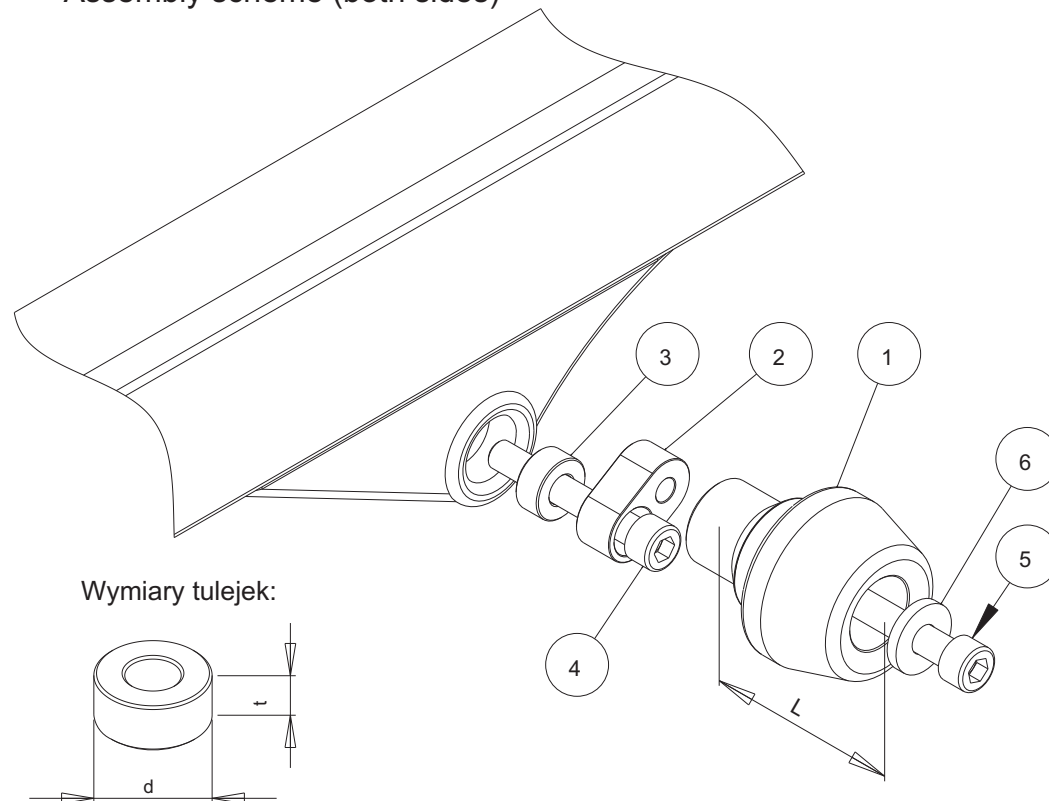

 Assembly position  
 (left side)

 Assembly position  
 (right side)

**Assembly instructions**

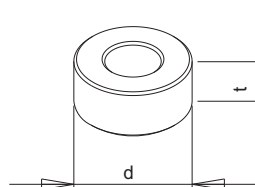
1. Remove the fairings.
2. Remove the screws indicated by the arrow.
3. Replace the removed screws by the new screws (part #4), aluminium sleeves parts #3) and metal bars (parts #2) according to the attached drawing. Put the metal bars (parts #2) to the right positions according to the drawing.
4. Mark the positions of the holes on the fairings. The correct positions are opposite the threaded holes in the metal parts #2.
5. Drill the holes in the fairings. We suggest to drill small holes first (eg. 0,20" in diameter). Then check if the holes are in correct positions by putting the fairings on.
6. If the positions of the holes are correct, assemble the fairings.
7. Assemble the sliders, the screws and the washers (parts #1, #5 and #6) according to the drawing. Put them into the second holes in parts #2.

We suggest to use the threadlocker to make sure that the screws do not get loose.

This product is entirely produced in the European Union. This product is a professional accessory to be used on the race track. Renner LTD takes no responsibility for any damages occurred despite of using protective accessories. For more information go to [www.renner-moto.com](http://www.renner-moto.com)

**Assembly scheme (both sides)**


Wymiary tulejek:



NR	ELEMENT	LEWA STRONA	PRAWA
1	Ślizgacz	L = 65 mm	L = 55 mm
2	Łącznik stalowy		
3	Tulejka	d=22 mm, t=10 mm	d=22 mm, t=5 mm
4	Śruba mocująca	M12, dł = 75 mm	M12, dł = 60 mm
5	Śruba	M10	M10
6	Podkładka		