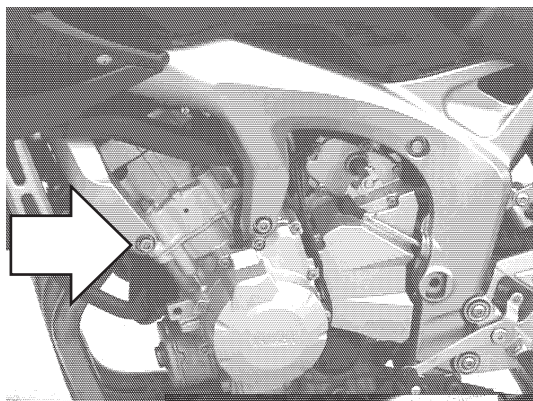
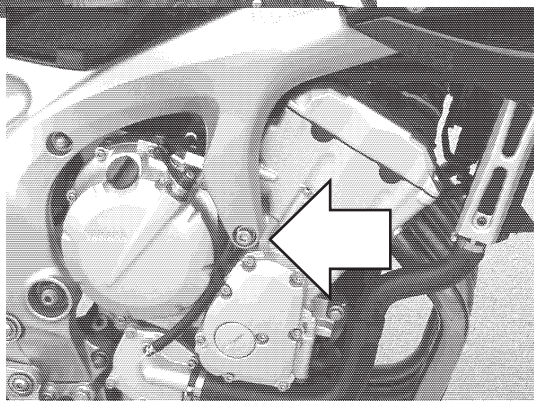


Zestaw ślizgaczy YAMAHA FZ 6 GT
Rok produkcji: wszystkie
Nr zestawu: 10420



Assembly position (left side)



Assembly position
(right side)

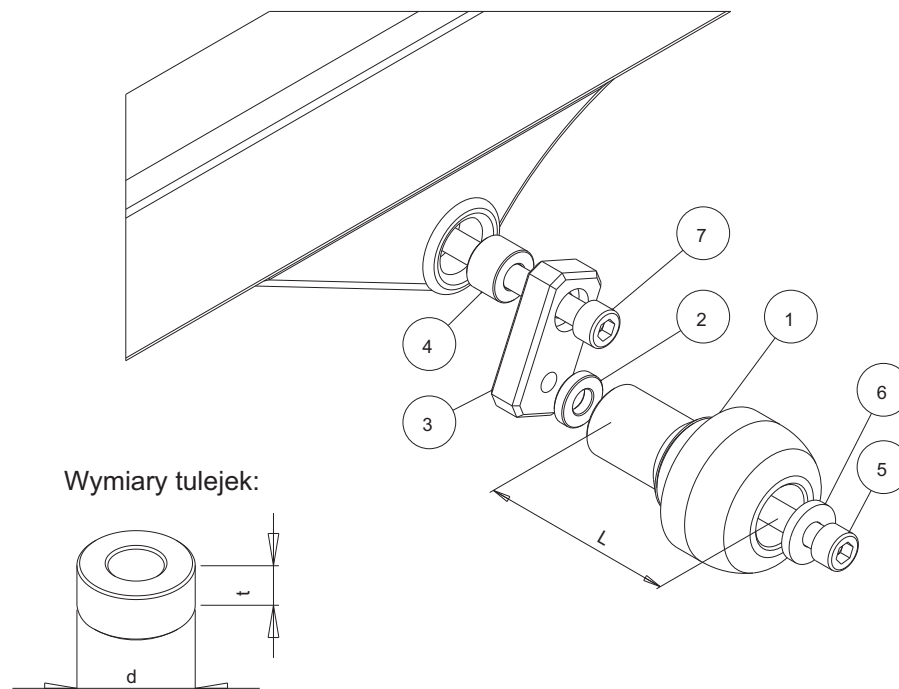
Assembly instructions

1. Remove the screws indicated by the arrows.
2. Replace the removed screws by the new screws (part #7), aluminium sleeve (part #4) and metal bars (parts #3) according to the attached drawing. Put the metal bars (parts #3) in the right positions according to the drawing.
3. Assemble the sliders and the screws according to the drawing (parts #1, #2, #5, #6).
4. Assemble the screws #5 and the sliders with the metal bars #3.

We suggest to use the threadlocker to make sure that the screws do not get loose.

This product is entirely produced in the European Union. This product is a professional accessory to be used on the race track. Renner LTD takes no responsibility for any damages occurred despite of using protective accessories. For more information go to www.renner-moto.com

Assembly scheme (both sides)



NR	ELEMENT	LEWA STRONA	PRAWA
1	Ślizgacz	L = 90 mm	L = 80 mm
2	Tulejka	d=20 mm, t=5 mm	d=20 mm, t=5 mm
3	Płytkę pośrednia	65x30x15	60x30x15
4	Tulejka	d=22 mm, t=15 mm	d=22 mm, t=15 mm
5	Śruba	M10	M10
6	Podkładka		
7	Śruba mocująca	M10, dł = 80 mm	M10, dł = 80 mm