

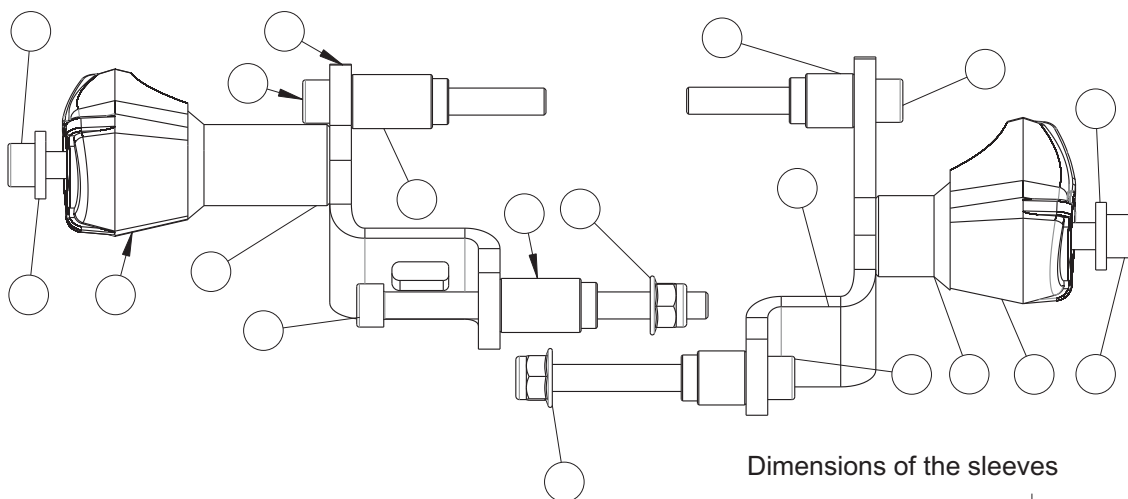
Protective Sliders (Crash Pads)

YAMAHA MT-09

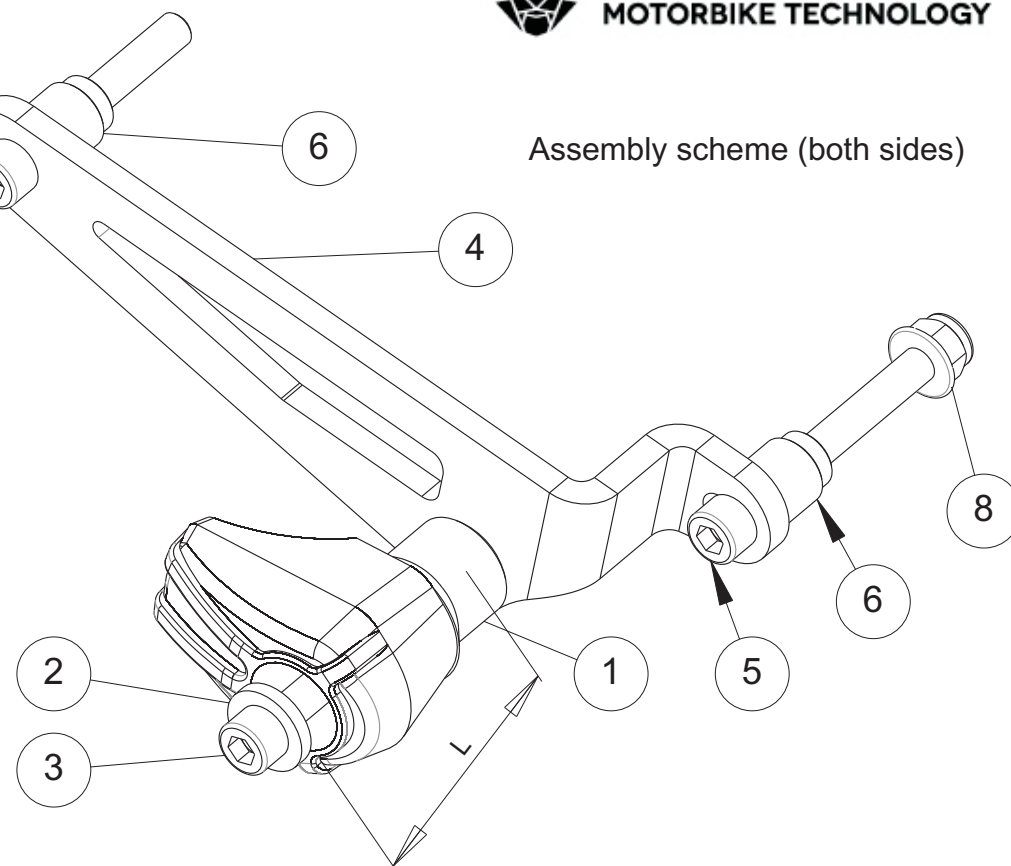
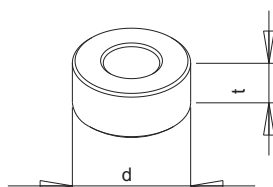
Year of production: All

Product code: 10429

Assembly scheme (both sides)



Dimensions of the sleeves



Assembly instructions

1. Replace the removed screws by the new screws (parts #4) and metal bars (parts #2) according to the attached drawing. Put the metal parts (parts #2) in the right positions according to the drawing.
2. Assemble the sliders and the screws according to the drawing (parts #1, #6, #5).
3. Assemble the screws #5 and the sliders with the metal bars #2.

We suggest to use the threadlocker to make sure that the screws do not get loose.

This product is entirely produced in the European Union. This product is a professional accessory to be used on the race track. Renner LTD takes no responsibility for any damages occurred despite of using protective accessories. For more information go to www.renner-moto.com

NoP	Part	Left Side	Right Side
1	Slider	L = 75 mm	L = 60 mm
2	Washer		
3	Screw	M10 70 mm	M10 50 mm
4	Bar		
5	Main Screw 1	M10 80 mm	M10 80 mm
6	Sleeve		
7	Main Screw 2	M10 70 mm	M10 70 mm
8	Washers M10	Underneath the	main screws