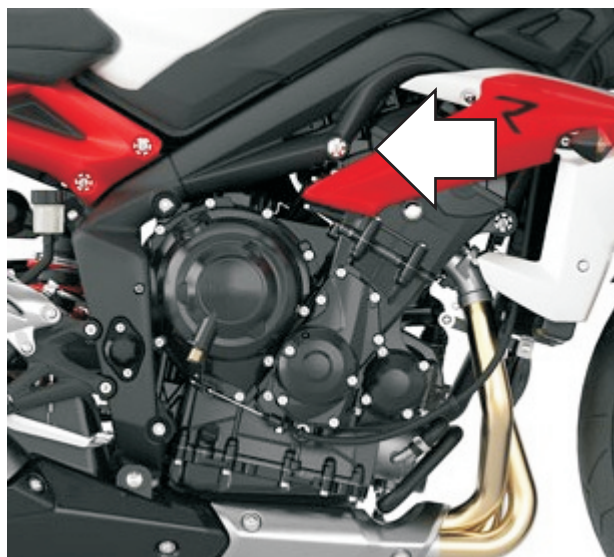


## Protective Sliders (Crash Pads)

### TRIUMPH Street Triple R

Year of Production: '13-

Product code: 10707



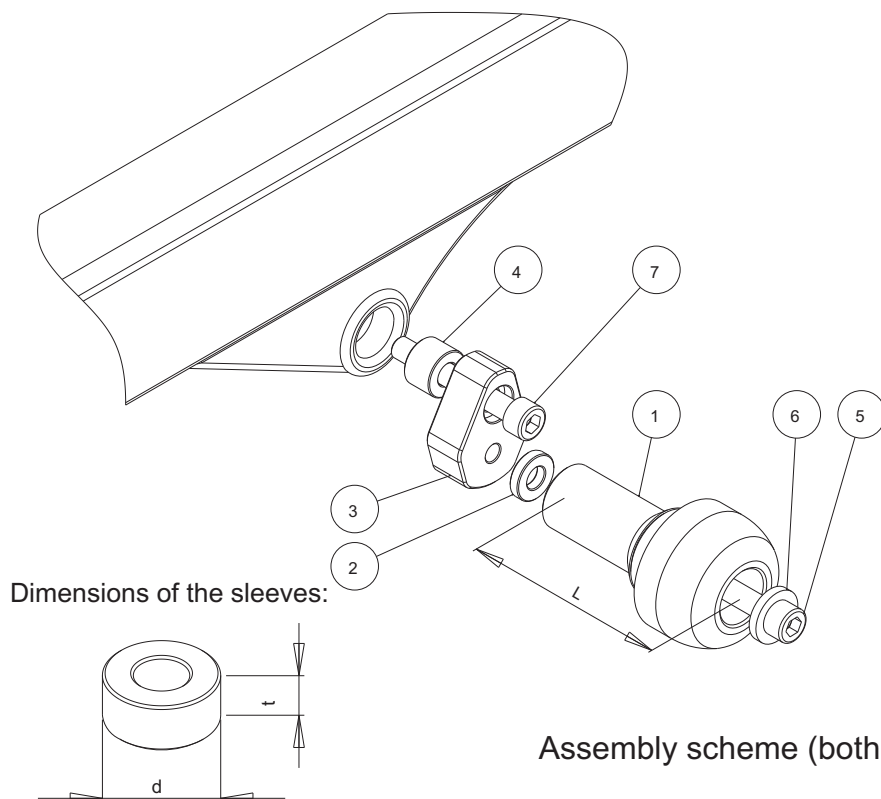
Assembly position (both sides)

#### Assembly instructions

1. Remove the screw indicated with the arrow.
2. Replace the removed screw with the new screws (part #7), nuts (part #8), aluminium sleeves (parts #4) and metal bars (parts #3) according to the attached drawing. Put the metal bars (parts #3) in the right positions according to the drawing.
3. Assemble the sliders and the screws according to the drawing (parts #1, #2, #5, #6).
4. Assemble the screws #5 and the sliders with the metal bars #3.

We suggest to use the threadlocker to make sure that the screws do not get loose.

This product is entirely produced in the European Union. This product is a professional accessory to be used on the race track. Renner LTD takes no responsibility for any damages occurred despite of using protective accessories. For more information go to [www.renner-moto.com](http://www.renner-moto.com)



Assembly scheme (both sides)

No	Part	Left Side	Right Side
1	Slider	L = 75 mm	L = 75 mm
2	Sleeve	d=20 mm, t=5 mm	d=20 mm, t=5 mm
3	Bar		
4	Sleeve	-	-
5	Screw	M10	M10
6	Sleeve		
7	Main screw	M10, 60 mm	M10, 60 mm