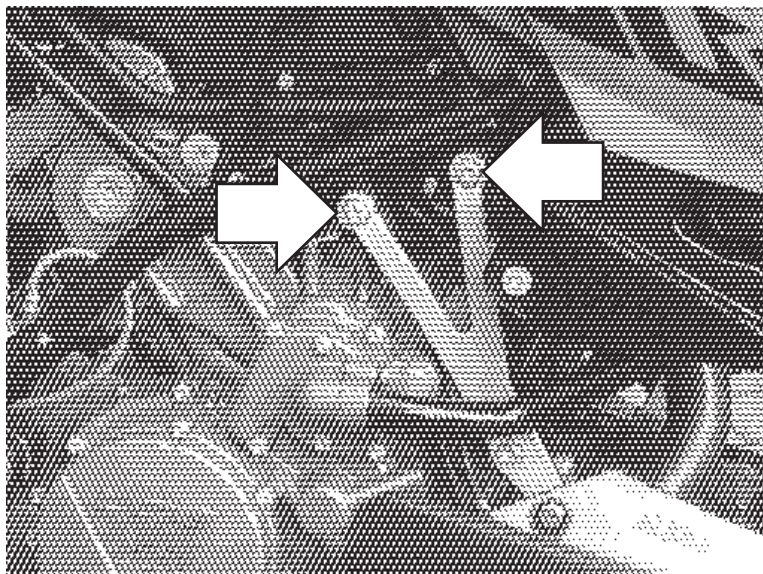
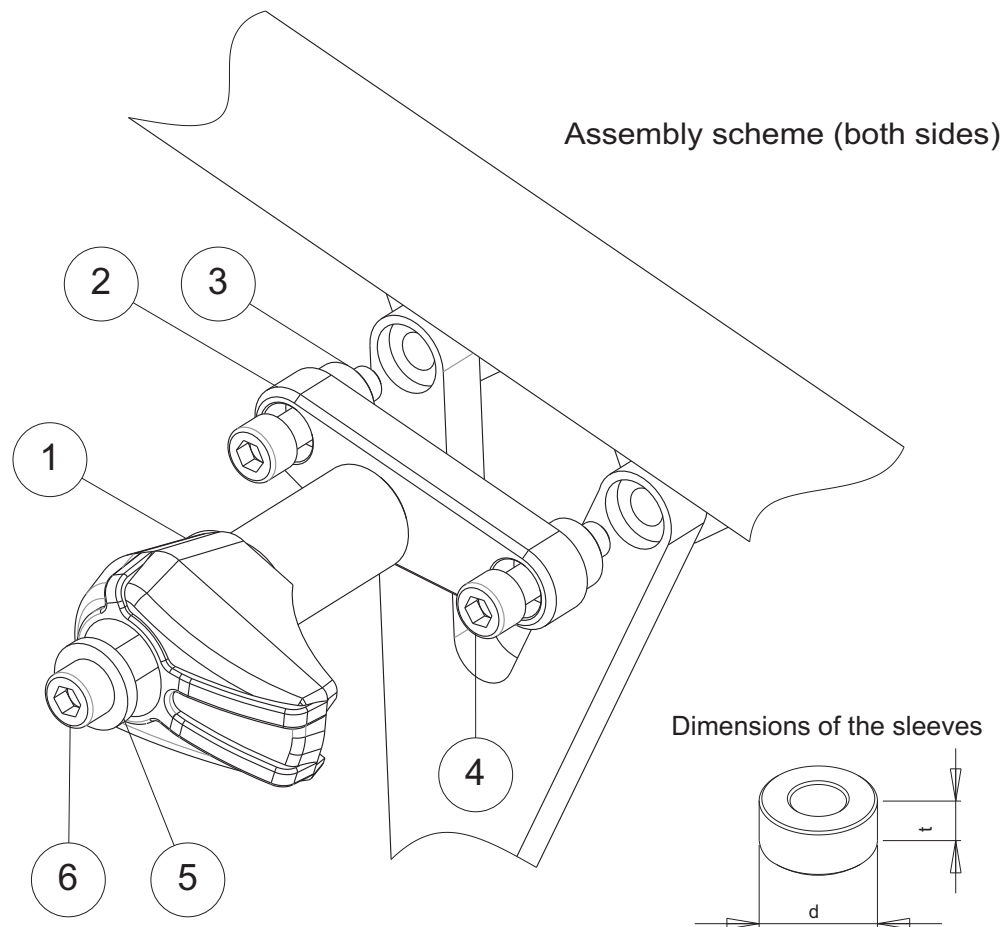


**Protective sliders  
KTM Duke 390**

Year of production: ALL  
 Product code: 10805



Assembly positions.  
 Left and right sides



**Assembly instructions**

1. Remove the engine screws indicated with the arrows.
2. Replace the removed screws by the new screws (parts #4) and metal bars (parts #2) according to the attached drawing. Put the metal parts (parts #2) in the right positions according to the drawing.
3. Assemble the sliders and the screws according to the drawing (parts #1, #6, #5).
4. Assemble the screws #5 and the sliders with the metal bars #2.

We suggest to use the threadlocker to make sure that the screws do not get loose.

This product is entirely produced in the European Union. This product is a professional accessory to be used on the race track. Renner LTD takes no responsibility for any damages occurred despite of using protective accessories. For more information go to [www.renner-moto.com](http://www.renner-moto.com)

No	Part	Left Side	Right Side
1	Slider	L = 85 mm	L = 85 mm
2	Metal bar		
3	Sleeve		
4	Main screw	M10	M10
5	Washer		
6	Screw	M10	M10